

PHIL PRICE MEMORIAL WOODPECKER RALLY



Phil Price
**RALLYING
LEGEND**

Supported by Presteigne Tyres and Phil Price Rally School



SPECTATOR INFORMATION



30TH AUGUST 2025
www.woodpecker-rally.co.uk



Promoted by Sixy & Worcestershire Motor Club
Image: Andrew Scott / Xlerate

WELCOME

Welcome to the Phil Price Memorial Woodpecker Rally supported for a fourth year by the Phil Price Rally School, celebrating the life of Phil Price, who set up and ran the Phil Price Rally School for 30 years until his untimely death in 2020.

In 2025, the Phil Price Memorial Woodpecker Rally will remain in its new home of Newtown, Powys, following the successful transition from Ludlow last year, with the kind permission of Britpart for scrutineering on Friday and rally finish on Saturday. The event will once again embrace the iconic Welsh forests, but this time with an even more exciting stage line-up featuring world-renowned tests made famous by Wales Rally GB.

Technical challenges will form the nucleus of the event, with the Hafren forest complex hosting three of the event's four tests in the morning loop. To enhance the rally experience, servicing will be located at Llanidloes Rugby Club, offering the perfect location for access back into the forests for the afternoon run.

Meanwhile, the rally headquarters, pre-event documentation, start and finish celebrations will all be based at the Britpart facility in Newtown, as in 2024.

We are very pleased to welcome the the Fuchs Lubricants British Historic Rally Championship, Protyre BTRDA Rally Series, Pirelli Motorsport UK Welsh Rally Championship, TCS Plant Rally Challenge, ANWCC Forest Stage Rally Championship, Celtic Micra Challenge and the MINI Challenge

We will again be running ALL 2WD cars first on the road in reverse seeded order followed by all 4WD cars seeded normally.

We would kindly ask you to listen to the instructions of the marshals, stand only where it is safe to do so and please do not endanger you or others whilst the special stage is live. We hope you enjoy your day, it's sure to be action packed!

THE EVENT ORGANISERS



'Held under the General Regulations of MOTORSPORT UK (incorporating the provisions of the International Sporting Code of the FIA) and the Supplementary Regulations.'

EVENT INFORMATION

A ROUND OF



SUPPORTED BY



THANKS TO

Phil Price Rally School
Motorsport UK
Kevin Witton - FLO
Sponsors and Advertisers

Dyfed Powys Police
Rally4Wales
Dorian Evans - RLO
Championship Coordinators

Powys County Council
Natural Resources Wales
Britpart

All residents on and around the Route

All volunteer officials, marshals, and safety teams

OFFICIALS

MSUK Steward	John Arnold	Entries Secretary	Jackie Harris
MSUK Safety Delegate	Jonathan Lord	Service area Co-Ordinator	Matt Blanchard
Event Steward	Mike Broad	Equipment	Di Brookfield
Event Steward	Rod Parkin	Service Manager	Matt Blanchard
Clerk Of the Course	Jon Aston	Stage set up Crew	Andy Benjamin, Ethan Harris, Matt Clive
Deputy Clerk of the Course	Andrew Kellitt	HQ Manager	Will Tindall
Event Secretary	Sarah Jones	CLO	Simon Gronow
Safety Officer	Tony Nash	Chief Medical Officer	Dave Cooper
Spectator Safety Officer	Alan Corns	Chief Timekeeper	Richard Blackshaw
Chief Marshal	Jason Bull	Environmental Scrutineer	Bryn Pound
Deputy Chief Marshal	Jeremy Hancock	Chief Scrutineer	Andrew Farrington
Radio coordinator	Roger Whitehouse	Results Service	Tynemouth Computer Services
Deputy Chief Marshal	Jason Bull	Media Officer	Matt Cotton
Comms coordinator	Phil Mostyn	Competitor Tracking	Craig Parry

SPECTATOR ACCESS

SPECIAL STAGES

Spectator access is available at SS1 & SS5 Britpart 1/2 and SS3 & SS7 Maesnant 1/2.
There will be no spectator access to Special Stages 2, 4, 6 and 8.

PARKING

Access to all spectator car parks costs £10 per car including an Entry List & guide.

SS1 & SS5 Britpart 1/2 Car Park open from 7:30am

SS3 & SS7 Maesnant 1/2 Car Park open from 8:30am

IMPORTANT: ACCESS TO SS3 & SS7 MAESNANT 1/2 IS ONLY SUITABLE WITH THOSE IN AN SUV OR 4X4. THE ACCESS ROAD IS UNEVEN AND WE WOULD ADVISE ONLY THOSE WITH HIGH GROUND CLEARANCE SHOULD ATTEMPT TO VISIT THIS LOCATION. YOU HAVE BEEN WARNED.

Access is also available, free of charge, to pre-event scrutiny, the ceremonial start and finish at Britpart in Newtown. You are also welcome to visit service in Llanidloes Rugby Club.

SCHEDULE

Friday 1st August
Friday 15th August

Entries open
Seeded Entries close

Friday 29th August

Noise test & scrutineering
Unit 40 Mochdre Industrial Estate, Mochdre, NEWTOWN, Powys, SY16 4LE.

Britpart, (Border Holdings)

Times
13:00-19:00

Saturday 30th August

Ceremonial Start

Britpart, (Border Holdings) (see map)

08:30

Spectator Stage SS1

Britpart 1 (see map)

09:28

Spectator Stage SS3

Maesnant 1 (see map)

10:23

Service

Llanidloes Rugby Club (see map)

11:50

Spectator Stage SS5

Britpart 2 (see map)

13:43

Spectator Stage SS7

Maesnant 2 (see map)

14:48

Ceremonial Finish

Britpart, (Border Holdings) (see map)

16:35

ALL 2WD cars run first on the road in reverse seeded order followed by all 4WD cars seeded normally.

FOLLOW US

You can catch up with all the latest news, results, images and gossip during the event via our dedicated social media feed: www.facebook.com/woodpeckerstagesrally and www.twitter.com/woodpeckerrally

SPECTATOR SAFETY

- All spectators are reminded that motorsport can be dangerous & despite us taking all reasonable precautions, unavoidable accidents can happen. In respect of these, you are present at your own risk.
- We ask that you obey all instructions of marshals, officials in relation to your safety and that of others. If instructions are not followed, the stage could be suspended whilst the problem is resolved or it could be cancelled.
- Please do not bring your dogs - disabled assistance dogs only (on a lead)
- Children and infants should ALWAYS be accompanied by an adequate amount of adults at all times who are responsible for their behaviour and safety.
- Prohibited area signs MEAN prohibited area, do NOT stand here.
- The marshals are all volunteers and are also very professional. Please respect them and their requests in order to ensure that we all have a safe and enjoyable rally.

"NO GO" & PROHIBITED AREAS
are defined by RED AND WHITE TAPE



SPECTATOR VIEWING AREAS
are defined by BLACK AND YELLOW TAPE



- *Expect the unexpected.*
- *Cars may run wide on corners*
- *Cars may cut corners*
- *Keep off the stage*
- *Cars may throw up stones*
- *Cars may overshoot junctions*
- *Cars may leave the road.*
- *Always keep your own safety in mind*
- *Park in a safe place*
- *Follow marshals' instructions*
- *Observe and obey all event signs*
- *Stay within the official spectator areas*
- *Do not enter any prohibited areas*

So, have fun but keep safe!





SPECTATE SAFELY!

- **Be alert!** Always expect the unexpected.
- Stay at the designated spectator areas.
- Remember that in an accident anything can happen.
- Always follow the instructions of the marshals.

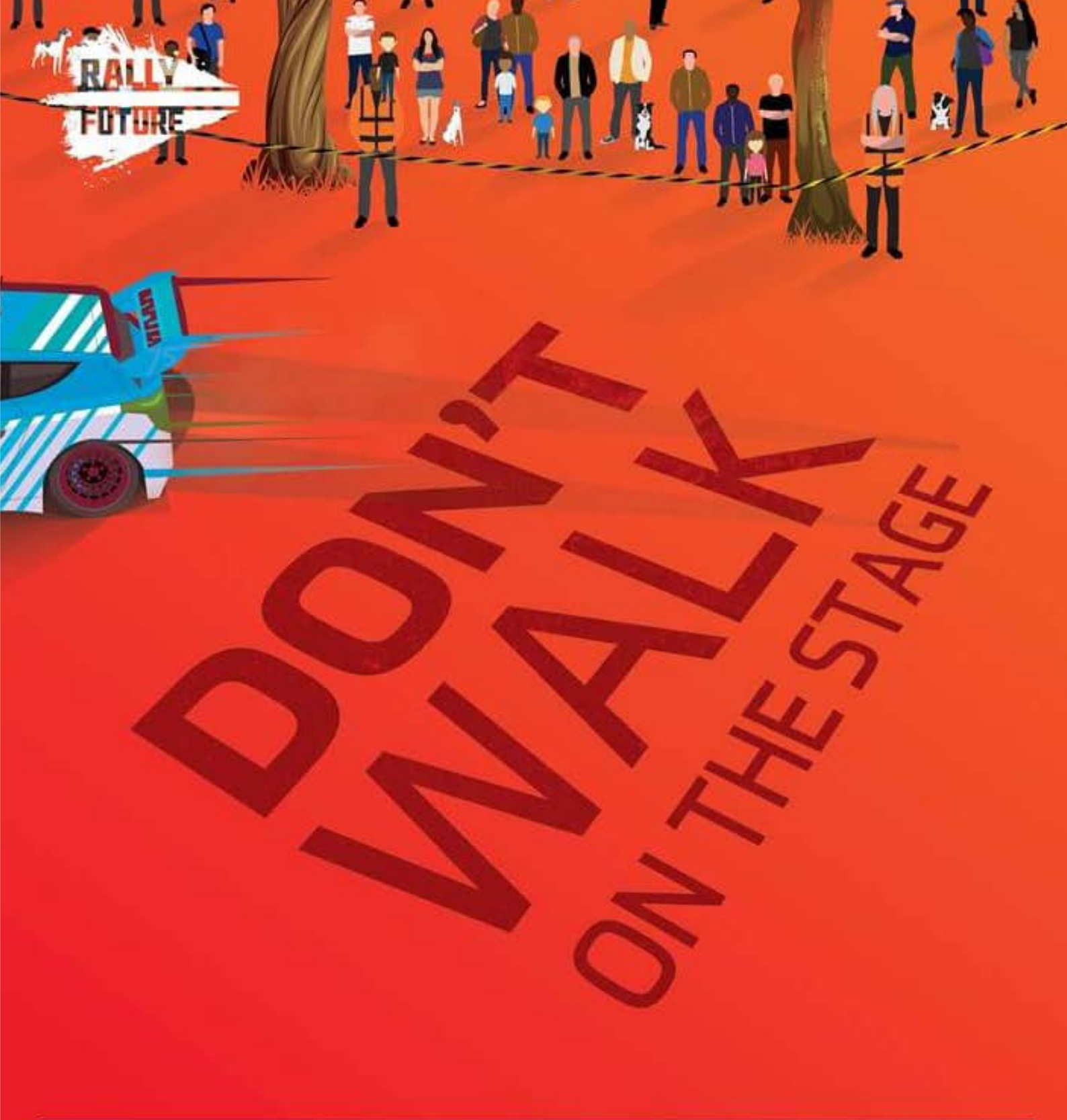
**YOUR SAFETY
YOUR LIFE**



motorsportuk.org

[#rallysafety](https://twitter.com/rallysafety)





Spectate Safely

Your safety - your life

Don't sit when watching or waiting.

Respect the tape and signage.

Keep children and pets under control.

Woodpecker Rally 2025

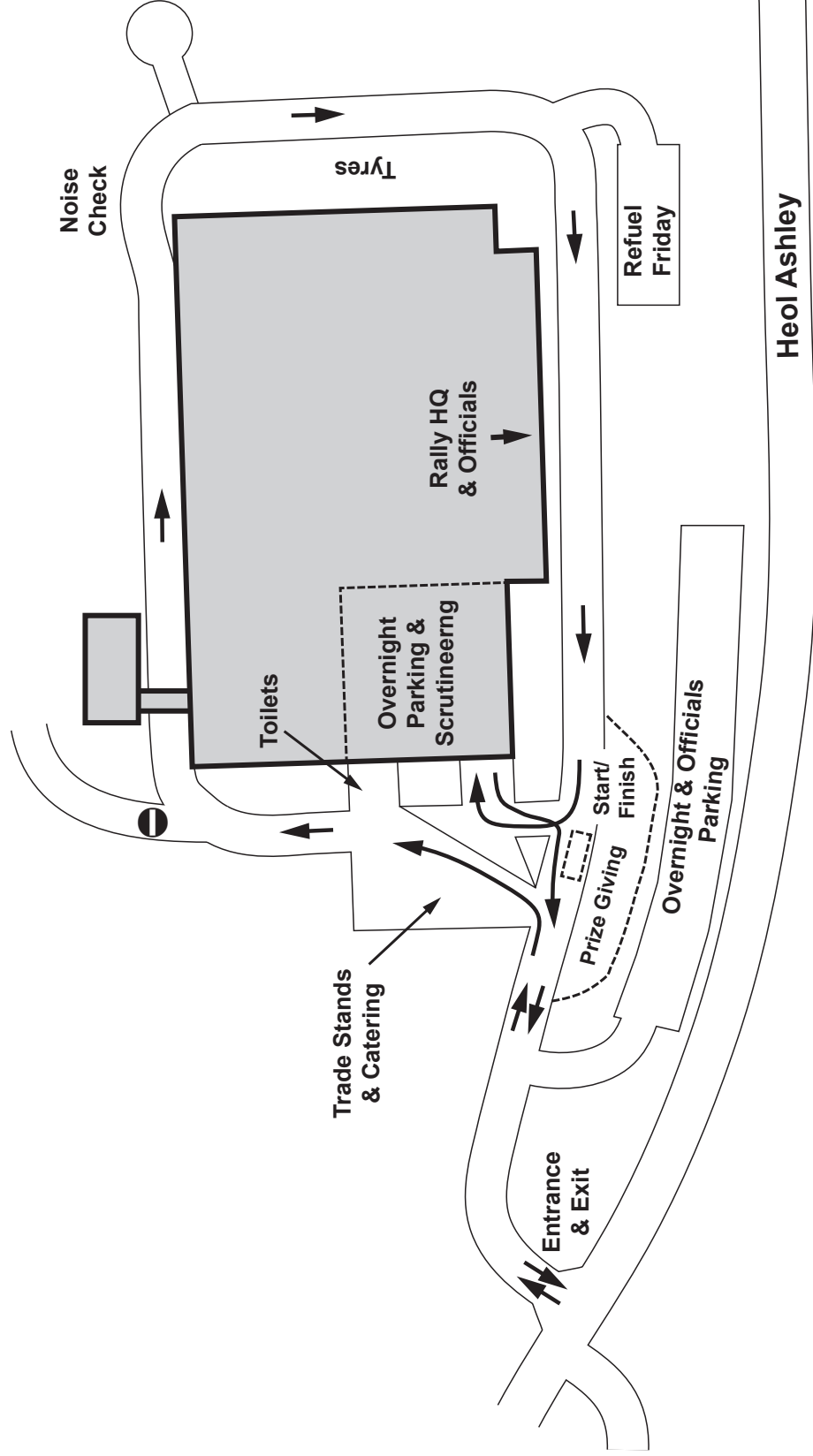
Rally HQ & Scrutineering
Newtown

Google Maps link
to entrance



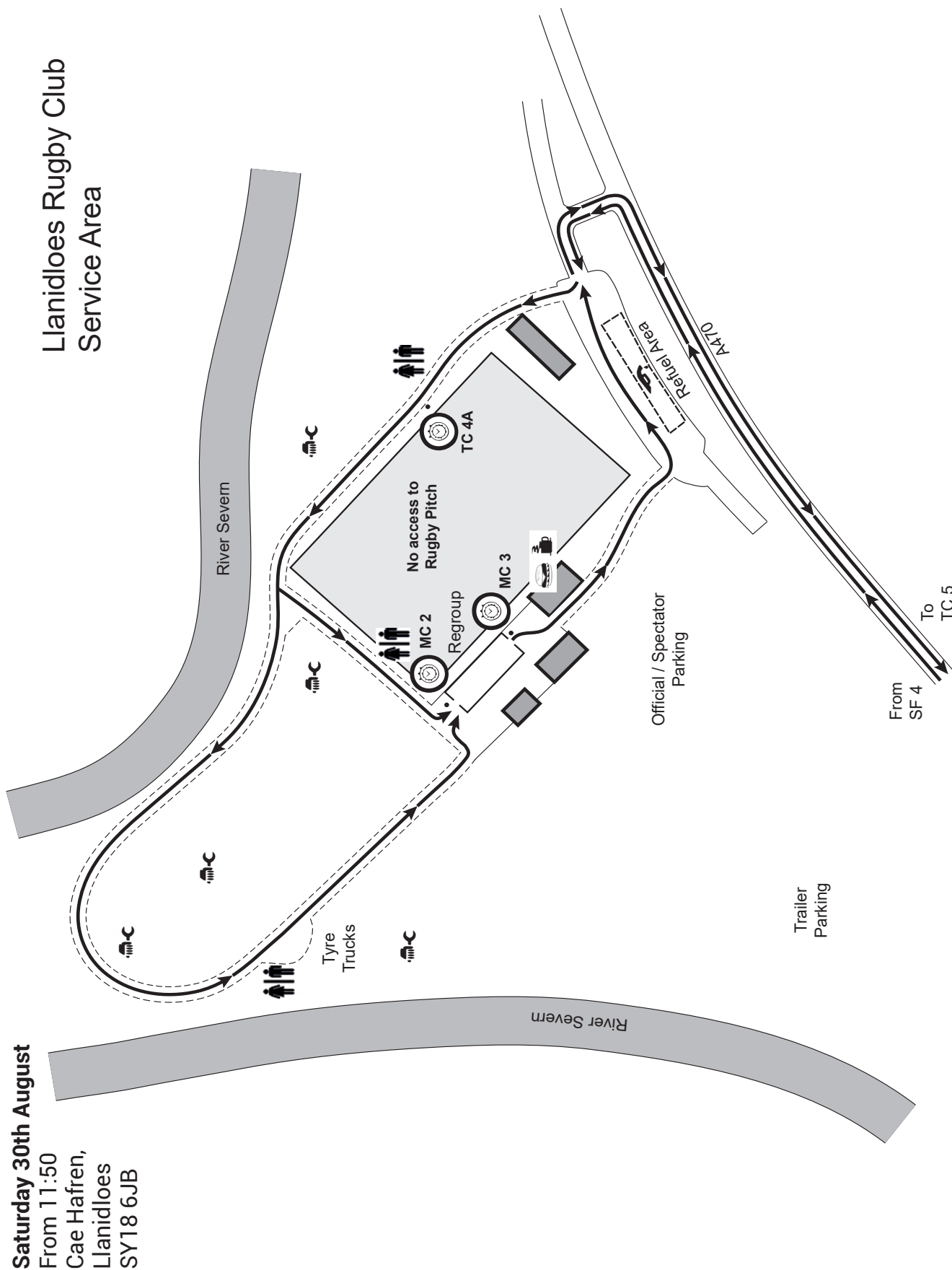
Friday 29th August
Noise test & scrutineering
13:00 – 19:00

Saturday 30th August
Ceremonial Start
08:30
Ceremonial Finish
16:35



Britpart (Border Holdings), Unit 40, Mochdre Industrial Estate, Mochdre, NEWTOWN, Powys, SY16 4LE

Service - Llanidloes Rugby Club



Phil Price Memorial Woodpecker Rally
Saturday 30 August 2025
Spectator Map

SS 1 & 5 Britpart
First Car Due
SS 1 - 09:28
SS 5 - 13:43

Approach from the B4518 at Staylitle
what3words: [///triple.dragging.cavalier](#)
QR code for Google Maps location:

Follow the route marked in blue on the map to reach and leave the car park
Charge: £10 per car

© Crown Copyright and database rights 2025
OS Licence No. AC0000847870

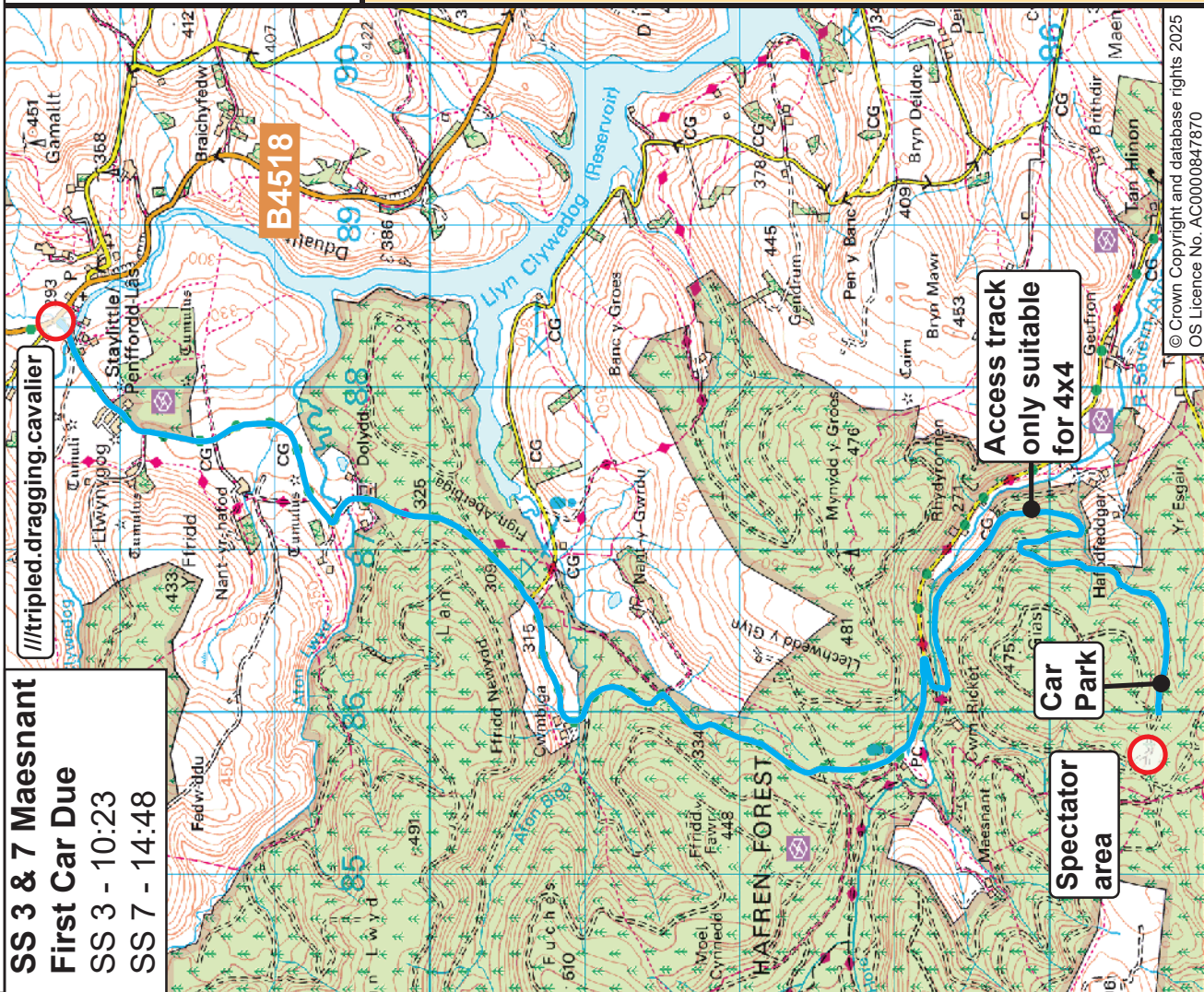
SS 3 & 7 Maesnant

First Car Due

SS 3 - 10:23

SS 7 - 14:48

///tripleddragging.cavalier



Approach from the B4518 at Staylittle

what3words: [///tripleddragging.cavalier](https://tripleddragging.cavalier)

QR code for Google Maps location:



Follow the route marked in blue on the map to reach and leave the car park

Charge: £10 per car





Spectate Safely

Your safety - your life

Stay behind the tree line. Stand back on a bank.
Never below the track level.



**RALLY
FUTURE**

RESPECT THE MARSHALS



Spectate Safely

Your safety - your life

#rallysafety

motorsportuk.org/rallysafety



Don't look any further!

Hills Ford have all your car and commercial vehicle needs covered for 2025!

HILLS FORD



- ✓ New Ford Car and Van Sales
- ✓ All makes approved Used Cars
- ✓ Collection and Delivery
- ✓ All makes Servicing, Tyres and MOT
- ✓ Motability
- ✓ Service Plans

Kidderminster – 01562 820 028
Malvern – 01684 892 345
hillsford.co.uk

HILLS FORD



Transit Centre

PRO™

- ✓ Full Range of New Ford
- ✓ Commercial Vehicles
- ✓ Used Vans and Pick-Ups
- ✓ Servicing available at Worcester Road
- ✓ Service Plans with FREE Collection & Delivery

Mustow Green – 01562 777 077
hillsford.co.uk/transit-centre



PILOTE

- ✓ Licensed Retailers of Pilote and Ford
- ✓ NEW Campervans and Motorhomes
- ✓ Used Campervans of all manufacturers
- ✓ Campervan Accessories

Mustow Green – 01562 777 077
hillsautomotive.co.uk

BROOKHIRE

- ✓ Cars & Commercial Vehicle Rentals
- ✓ Short, Medium & Long Term Rental
- ✓ Minibus Hire
- ✓ Campervan Hire – ask about 'Try Before You Buy'
- ✓ Business Hire Continental Hire
- ✓ Weekend Hire

Malvern – 01684 210 512
Kidderminster – 01562 549 730
brookhire.co.uk

Over 300 new and used vehicles in stock to buy or rent



Scan ME





**NEVER
RISK YOUR OWN
SAFETY**

**RALLY
FUTURE**



Spectate Safely

A safe rally is a good rally

If one car goes off, the next might too. If you **have** to assist then **always** ensure that one person acts as lookout.



PHIL PRICE RALLY SCHOOL

Est Since
1989

A HANDS ON ACTION PACKED DAY

- 🚩 One Day Intensive Course
- 🚩 Corporate Days & Groups
- 🚩 MSA Licence Exam
- 🚩 Testing Venue Hire

Authentic Welsh Gravel Rally Stage



Book Online Today



Tel: 01547 550 300 | www.philprice.co.uk

 @philpricerallying

 @pprsuk